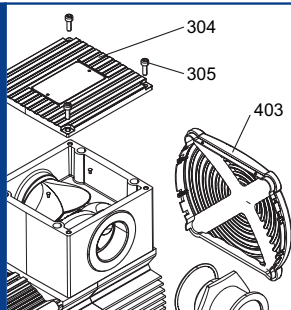


VASF 1.80/1-3110  
VASF 1.80/2-3110



**SERVICE**

**BECKER**  
D-42279 Wuppertal  
www.becker-international.com

year XXXX

No (-) XXXX

type VASF 1.80/1-XX

frequency	XXXX	Hz
speed	XXXX	min <sup>-1</sup>
power required	XXXX	kW
inlet capacity	XXXX	m <sup>3</sup> /h
pressure +	XXXX	mbar
vacuum -	XXXX	mbar

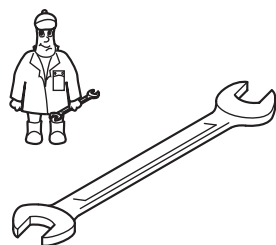
Made in Germany

Index  
Variante

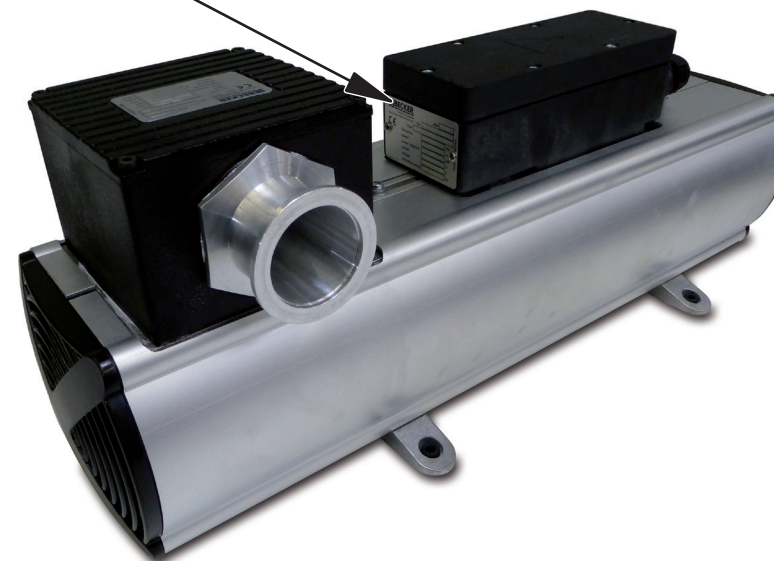
Ersatzteilliste  
Spare parts list  
Liste de pièces de rechange  
Listino pezzi di ricambio  
Lista de peças sobresselentes  
Reserveonderdelenlijst  
Atsarginių dalių sąrašas  
Varuosad nimekirja  
Rezerves daļu saraksts

Reservdelists  
Reservdelslista  
Varaosuettelo  
Reservdelists  
Wykaz części zamiennych  
Tartalékalkatrész lista  
Seznam náhradních dílů  
Seznam nadomestnih delov  
Zoznam náhradných dielov  
Rezervni dijelovi popis

Lista pieselor de schimb  
Páirteanna spártha liosta  
Κατάλογος ανταλλακτικών  
Yedek parça listesi  
Списък на резервните части  
Перечень запасных частей  
スペアパーツリスト  
예비 부품 목록  
备用零件目录

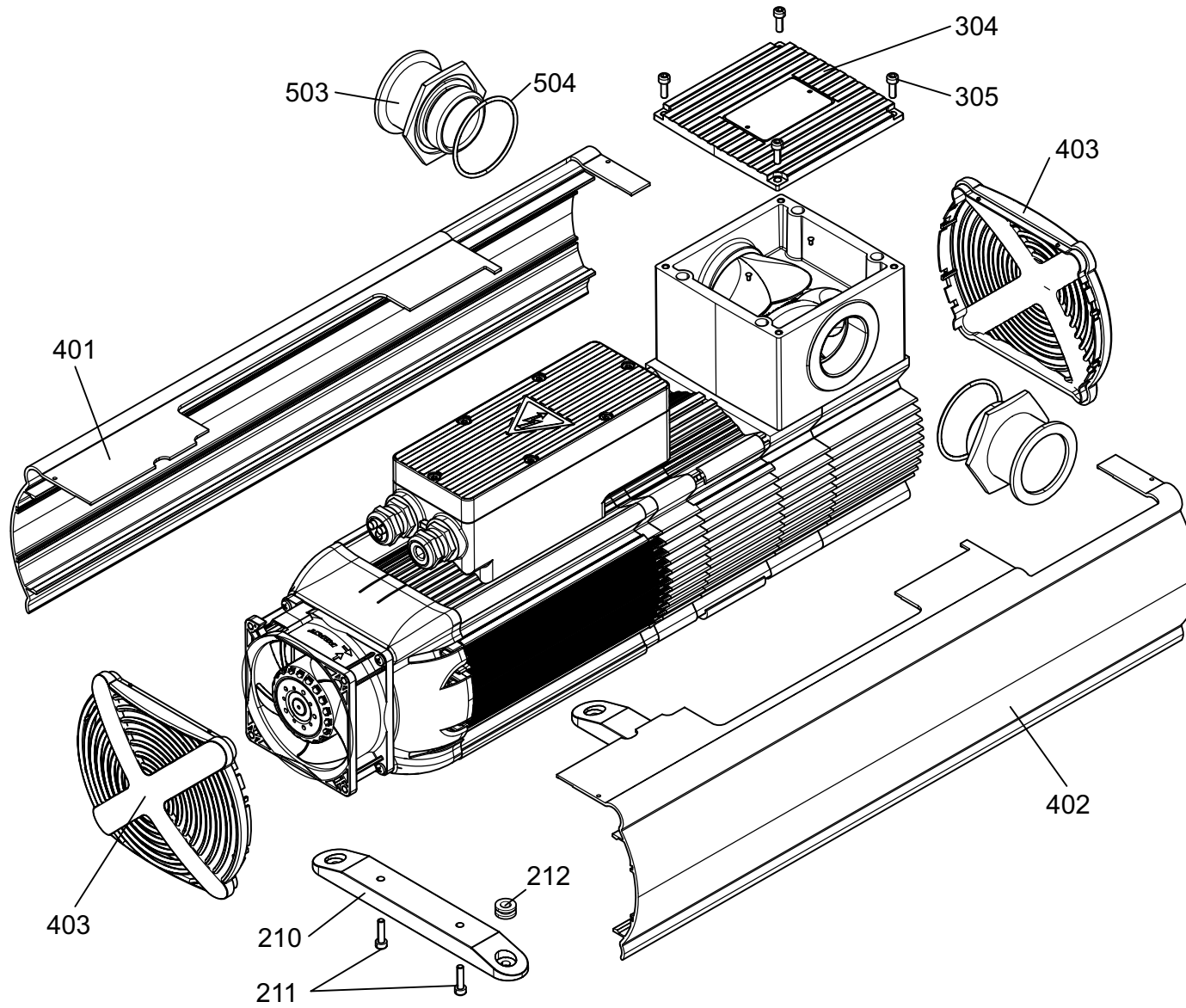


Wartung  
Maintenance  
Entretien  
Manutenzione  
Mantenimiento

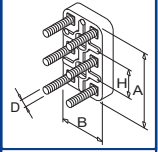
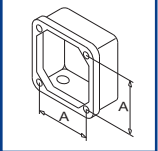
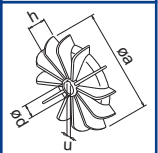
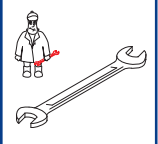



**SERVICE**  
[www.becker-international.com](http://www.becker-international.com)  
Sales and service network


VASF 1.80/1-3110  
VASF 1.80/2-3110





**SERVICE** ?




- INDEX	Pos.	Bestell Nr.	Beschreibung	
VASF 1.80/X -3110	210	015100 42700	FUSS	
	211	945301 00000	INNENSECHSKANTSCHRAUBE, DIN912 M4X16	
	212	951930 00000	GUMMIFORMTEIL	
	304	005601 42700	DECKEL	
	305	945311 10000	INNENSECHSKANTSCHRAUBE, DIN4762 M4X12	
	401	006804 42700	GERÄTEHAUBE	
	402	006805 42700	GERÄTEHAUBE	
	403	002500 42700	ABDECKHAUBE	
	503	903613 00000	KLEINFLANSCH - OPTIONAL	
	504	913121 50100	O-RING, 50X2,5 - OPTIONAL	

- INDEX	Pos.	Ident No.	Description	
VASF 1.80/X -3110	210	015100 42700	FOOT	
	211	945301 00000	SOCKET HEAD SCREW, DIN912 M4X16	
	212	951930 00000	BUMPER	
	304	005601 42700	LID	
	305	945311 10000	SOCKET HEAD SCREW, DIN4762 M4X12	
	401	006804 42700	PROTECTING HOOD	
	402	006805 42700	PROTECTING HOOD	
	403	002500 42700	COVERING CAP	
	503	903613 00000	SMALL FLANGE - OPTIONAL	
	504	913121 50100	O-RING, 50X2,5 - OPTIONAL	

- INDEX	Pos.	No. identification	Designation	
VASF 1.80/X -3110	210	015100 42700	PIED	
	211	945301 00000	VIS HEXAGONALE INTERNE, DIN912 M4X16	
	212	951930 00000	AMORTISSEUR CAOU TCHOUC	
	304	005601 42700	COUVERCLE	
	305	945311 10000	VIS HEXAGONALE INTERNE, DIN4762 M4X12	
	401	006804 42700	CARTER PROTECTEUR	
	402	006805 42700	CARTER PROTECTEUR	
	403	002500 42700	CAPOT DE PROTECTION	
	503	903613 00000	PETITE BRIDE - EN OPTION	
	504	913121 50100	ANNEAU-O, 50X2,5 - EN OPTION	

- INDEX	Pos.	No. identificazione	Designazione	
VASF 1.80/X -3110	210	015100 42700	PIE	
	211	945301 00000	VITE ESAGONALE INTERNA, DIN912 M4X16	
	212	951930 00000	PINGENTE DI GOMMA	
	304	005601 42700	COPERCHIO	
	305	945311 10000	VITE ESAGONALE INTERNA, DIN4762 M4X12	
	401	006804 42700	CARTER DI PROTEZIONE	
	402	006805 42700	CARTER DI PROTEZIONE	
	403	002500 42700	COPERCHIO	
	503	903613 00000	PICCOLA FLANGIA - OPTIONALE	
	504	913121 50100	ANELLO-O, 50X2,5 - OPTIONALE	

- INDICE	Pos.	No. de pedido	Descripción	
VASF 1.80/X -3110	210	015100 42700	PIE	
	211	945301 00000	TORNILLO HEXAGONAL INTERIOR, DIN912 M4X16	
	212	951930 00000	BOQUILLA DE CABLE	
	304	005601 42700	TAPA	
	305	945311 10000	TORNILLO HEXAGONAL INTERIOR, DIN4762 M4X12	
	401	006804 42700	CAPERUZA DE APARATO	
	402	006805 42700	CAPERUZA DE APARATO	
	403	002500 42700	TAPA	
	503	903613 00000	BRIDA PEQUEÑA - OPCIONAL	
	504	913121 50100	JUNTA TÓRICA, 50X2,5 - OPCIONAL	